

▼ Shown: MS2-10



The Universal Hydraulic Tool Box



Maintenance Sets

Enerpac Maintenance sets are a complete assortment of hydraulic powered tools. Using these sets allows you to quickly configure a unique tool to meet your most difficult jobs. Built around the Enerpac light weight hand pump, hose and cylinder, these sets enable you to push, pull, lift, press, straighten, spread and clamp with forces up to 12,5 ton.

- All sets include Enerpac pump, hose, cylinder and gauge
- Lock-on or threaded connectors
- Complete maintenance set for almost every maintenance application



More Information







For detailed information on all included attachments, see the next pages.

Page: 154



◀ *Clamping a workpiece is just one of the many applications for the Enerpac maintenance sets.*

▼ QUICK SELECTION CHART

Capacity using attachments*	Set Model Number						Number of Attachment Components	 (kg)
2,5 (22)	MS2-4	P-142	HC-7206	RC-55	GP-10S	GA-2	35	26
2,5 (22)	MSFP-5	P-142	HC-7206	RC-55	G2535L	GA-3	24	20
5,0 (50)	MSFP-10	P-392	HC-7206	RC-106	G2535L	GA-3	22	48
5,0 (50)	MS2-10	P-392	HC-7206	RC-106	GP-10S	GA-2	40	63
12,5 (116)	MS2-20	P-392	HC-7206	RC-256	GP-10S	GA-2	19	95
5,0-12,5 (50-116)	MS2-1020	P-392	HC-7206	RC-102, -106, -256	GP-10S	GA-2	59	158

* If no attachments are being used, capacity is double these values. Maximum operating pressure is then 700 bar.

Universal Maintenance Sets



CAUTION!

When cylinders are used with maintenance set attachments or components, the maximum system pressure must be limited to half the rated pressure (350 bar).

MS Series



Capacity (using attachments):

2,5 - 12,5 ton

Maximum Operating Pressure:

350 bar

▼ APPLICATION EXAMPLES



MS-Series, Maintenance Sets



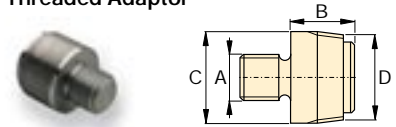
CAUTION! When cylinders are used with maintenance set attachments or components, the maximum system pressure must be limited to half the rated pressure (350 bar).

Note: All dimensions in millimetres.

Set Model Number	MS2-4	MSFP-5	MSFP-10	MS2-10	MS2-20	MS2-1020	
Base/Collar/ Plunger Attachments	2,5 tons	2,5 tons	5,0 tons	5,0 tons	12,5 tons	5-12,5 tons	
1	A-23	A-23	A-13	A-13	A-28	A-13 / A-28	
2	A-25	A-25	A-21	A-21	A-27	A-21 / A-27	
3	A-1034	A-1034	A-20	A-20	A-595	A-20 / A-595	
4	MZ-4010	MZ-4010	A-14	A-14	A-243	A-14 / A-243	
5	A-545	A-545	A-10	A-10	—	A-10 (2x)	
6	—	—	—	A-8	—	A-8	
7	A-530	A-530	A-6	A-6	—	A-6	
8	MZ-4011	—	—	A-192	—	A-192	
9	—	—	—	A-305	—	A-305	
10	A-531	A-531	A-18	A-18	—	A-18	
11	—	—	—	A-185	—	A185	
12	A-532	A-532	A-15	A-15	—	A-15	
13	—	—	—	—	A-607	A-607	
14	A-629	A-629	A-129	A-129	—	A-129	
15	A-539	A-539	A-128	A-128	—	A-128	
Chains and Attach- ments for Pulling	2,5 tons	2,5 tons	5,0 tons	5,0 tons	12,5 tons	5-12,5 tons	
16	A-558	—	—	A-132	A-238	A-132, -238	
17	—	—	—	A-5 (2x)	—	A-5 (2x)	
18	A-557(2x)	—	—	A-141(2x)	A-218(2x)	A-141(2x) / A-218 (2x)	
Tubes, Connectors and Adaptors	2,5 tons	2,5 tons	5,0 tons	5,0 tons	12,5 tons	5-12,5 tons	
19	A-544	—	—	A-19(2x)	A-242(2x)	A-19 (2x) / A-242 (2x)	
20	WR-5	WR-5	WR-5	A-92	—	A-92	
21	MZ-4013(4x)	MZ-4013 (4x)	A-16(4x)	A-16(4x)	—	A-16(4x)	
22	MZ-4007(3x)	MZ-4007(3x)	MZ-1050(2x)	MZ-1050 (2x)	—	MZ-1050 (3x)	
23	MZ-4008(2x)	—	—	MZ-1051	—	MZ-1051 (2x)	
24	MZ-4009	MZ-4009	MZ-1052	MZ-1052	—	MZ-1052	
25	—	—	—	A-285	—	A-285	
26	A-650	—	—	—	—	—	
27 Length: 76mm	MZ-4002	MZ-4002	—	—	—	—	
 Ø 42,5 mm	127mm	MZ-4003	MZ-4003	MZ-1002	MZ-1002	—	MZ-1002
	254mm	MZ-4004	MZ-4004	MZ-1003	MZ-1003	A-239	MZ-1003 and A-239
	457mm	MZ-4005(2x)	MZ-4005	MZ-1004	MZ-1004	A-240	MZ-1004 (2x) and A-240
	584mm	MZ-4006(2x)	MZ-4006	—	—	—	—
	762mm	—	—	MZ-1005	MZ-1005	A-241	MZ-1005 (2x) and A-241
28 Case	CW-350	CW-350	CW-350	CW-350	CW-350	CW-350	
Weight	26 kg	20 kg	48 kg	63 kg	95 kg	158 kg	

Base/Collar/Plunger Attachments

1 Threaded Adaptor



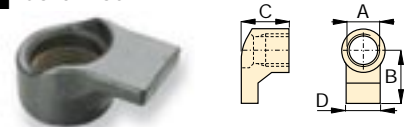
ton	Model Nr.	A	B	C	D
2,5	A-23	3/4" - 16 UN	28	26	3/4" - 14 NPT
5,0	A-13	1" - 8 UN	31	42	1 1/4" - 11 1/2 NPT
12,5	A-28	1 1/2" - 16 UN	47	69	2" - 11 1/2 NPT

2 Base Attachment



ton	Model Nr.	A	B	C	D
2,5	A-25	3/4" - 14 NPT	50	12	44
5,0	A-21	1 1/4" - 11 1/2 NPT	57	12	65
12,5	A-27	2" - 11 1/2 NPT	63	12	98

3 Collar Toe



ton	Model Nr.	A	B	C	D
2,5	A-1034	1 1/2" - 16 UN	54	50	31
5,0	A-20	2 1/4" - 14 UN	80	57	57
12,5	A-595	3 5/16" - 12 UN	103	51	80

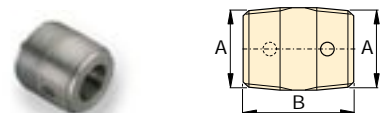
4 Flat Base



ton	Model Nr.	A	B	C	D
2,5	MZ-4010	3/4" - 14 NPT	114	31	63
5,0	A-14	1 1/4" - 11 1/2 NPT	165	35	88
12,5	A-243*	2" - 11 1/2 NPT	165	58	165

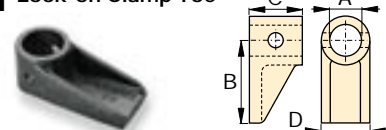
* A-243 is a round base model

5 Threaded Connector



ton	Model Nr.	A	B
2,5	A-545	3/4" - 14 NPT	35
5,0	A-10	1 1/4" - 14 NPT	41

6 Lock-on Clamp Toe



ton	Model Nr.	A	B	C	D
5,0	A-8	43	105	50	57

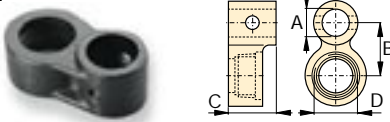
Universal Maintenance Sets, MS-Series

7 Threaded Plunger Toe



ton	Model Nr.	A	B	C	D
2,5	A-530	3/4" - 14 NPT	57	25	33
5,0	A-6	1 1/4" - 11 1/2 NPT	28	31	57

8 Collar Clamp Head



ton	Model Nr.	A	B	C	D
2,5	MZ-4011	3/4" - 14 NPT	49	76	1 1/2" - 16 UN
5,0	A-192	42	63	50	2 1/4" - 14 UN

9 Spreader Toe



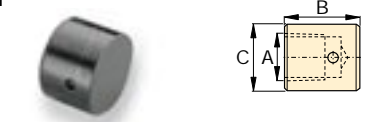
ton	Model Nr.	A	B	C	D
5,0	A-305	1 1/4" - 11 1/2 NPT	114	25	50

10 Serrated Saddle



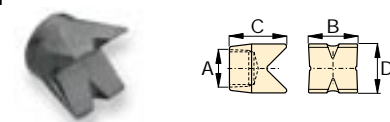
ton	Model Nr.	A	B	C
2,5	A-531	3/4" - 14 NPT	27	31
5,0	A-18	1 1/4" - 11 1/2 NPT	38	50

11 Smooth Saddle



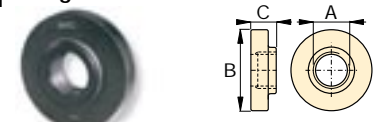
ton	Model Nr.	A	B	C
5,0	A-185	1 1/4" - 11 1/2 NPT	38	50

12 90° V-Base



ton	Model Nr.	A	B	C	D
2,5	A-532	3/4" - 14 NPT	38	47	25
5,0	A-15	1 1/4" - 11 1/2 NPT	54	57	54

13 Plunger Base



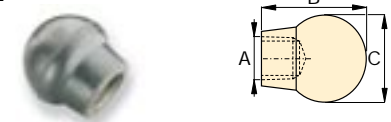
ton	Model Nr.	A	B	C
12,5	A-607	2" - 11 1/2 NPT	166	38

14 Wedge Head



ton	Model Nr.	A	B	C	D
2,5	A-629	3/4" - 14 NPT	69	33	28
5,0	A-129	1 1/4" - 11 1/2 NPT	101	50	44

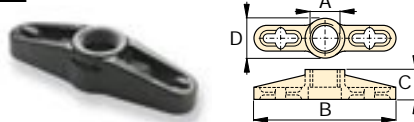
15 Rubber Flex-Head



ton	Model Nr.	A	B	C
2,5	A-539	3/4" - 14 NPT	44	69
5,0	A-128	1 1/4" - 11 1/2 NPT	86	86

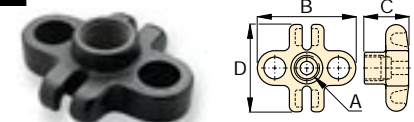
Chains and Attachments for Pulling

16 Single Chain Plate



ton	Model Nr.	A	B	C	D
2,5	A-558	1 1/2" - 16 UN	196	39	44
5,0	A-132	2 1/4" - 14 UN	307	63	79
12,5	A-238	3 5/16" - 12 UN	450	102	125

17 Double Chain Plate



ton	Model Nr.	A	B	C	D
5,0	A-5	1 1/4" - 11 1/2 NPT	130	50	126

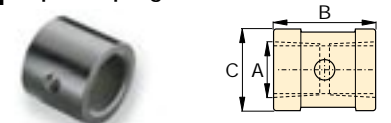
18 Chain with Hook



ton	Model Nr.	Chain Length
2,5	A-557	1,5 metres
5,0	A-141	1,8 metres
12,5	A-218	2,4 metres

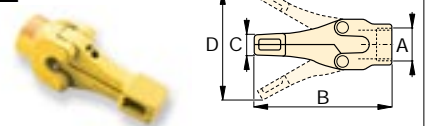
Tubes, Connectors and Adaptors

19 Pipe Coupling



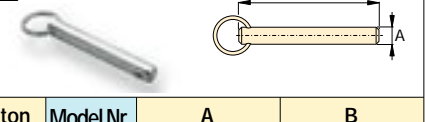
ton	Model Nr.	A	B	C
2,5	A-544	3/4" - 14 NPT	42	33
5,0	A-19	1 1/4" - 11 1/2 NPT	49	54
12,5	A-242	2" - 11 1/2 NPT	88	82

20 Spreader



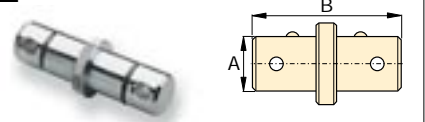
ton	Model Nr.	A	B	C	D
1,0	WR-5	—	223	9	94
1,0	A-92	2 1/4" - 14 UN	244	35	158

21 Lock Pin



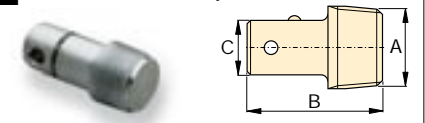
ton	Model Nr.	A	B
2,5	MZ-4013	7,9	41
5,0	A-16	11,2	82

22 Lock-on Connector



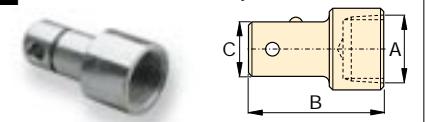
ton	Model Nr.	A	B
2,5	MZ-4007	19	79
5,0	MZ-1050	33	127

23 Male Lock-on Adaptor



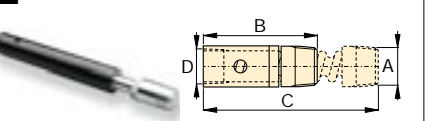
ton	Model Nr.	A	B	C
2,5	MZ-4008	3/4" - 14 NPT	60	19
5,0	MZ-1051	1 1/4" - 11 1/2 NPT	90	33

24 Female Lock-on Adaptor



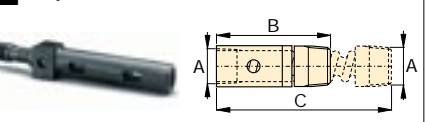
ton	Model Nr.	A	B	C
2,5	MZ-4009	3/4" - 14 NPT	65	19
5,0	MZ-1052	1 1/4" - 11 1/2 NPT	96	33

25 Adjustable Extension



ton	Model Nr.	A	B	C	D
5,0	A-285	1 1/4" - 11 1/2 NPT	335	441	33

26 Slip-Lock Extension



ton	Model Nr.	A	B	C
2,5	A-650	3/4" - 14 NPT	200	365